

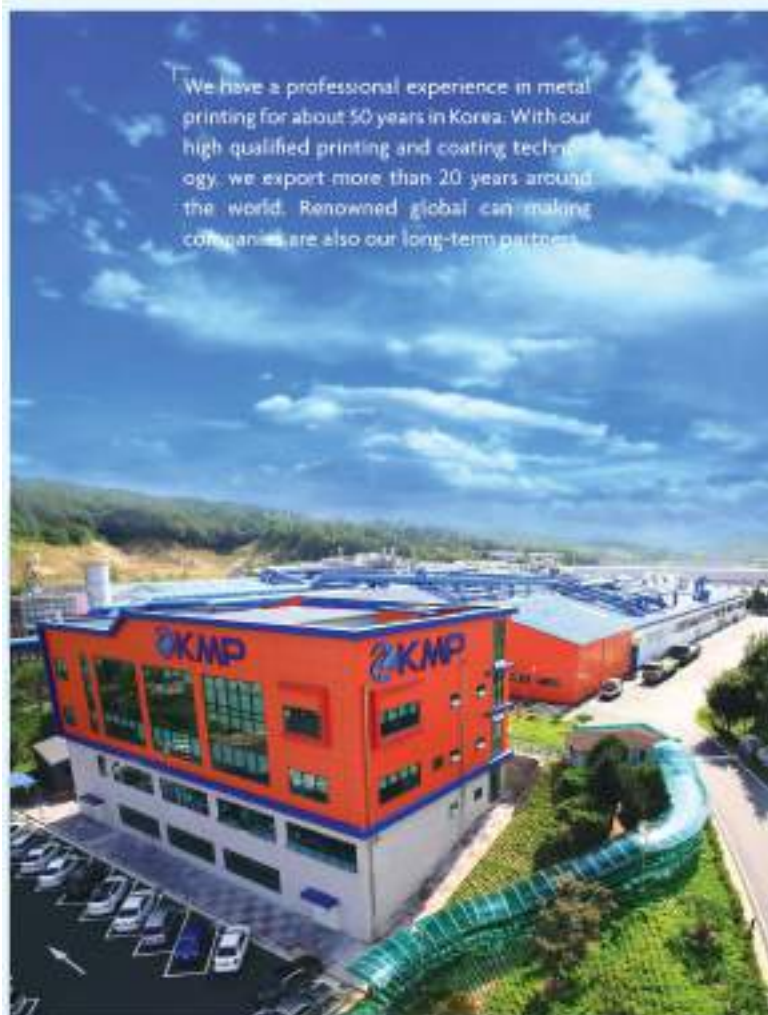
GLOBAL METAL
PRINTING
PARTNER FOR
CAN MAKERS

PUBLIC PRINTING FACILITY
PLATFORM YOU CAN USE ANY
TIME YOU NEED



HISTORY

We have a professional experience in metal printing for about 50 years in Korea. With our high qualified printing and coating technology, we export more than 20 years around the world. Renowned global can making companies are also our long-term partners.



- 2018** Acquired ISO14001 Environmental Certificate
- 2017** Acquired FSSC22000 Food Safety System Certificate
- 2017** Installed 8 color full automatic printing line
- 2017** Installed a full automatic tandem coating line
- 2014** Second 6 color full automatic printing line installed
- 2013** Changed company name into **KMP** and New CI proclaimed
- 2012** Installed Coil shearing line. (straight/scroll sheet)
- 2008** Constructed RTO facility to save energy and preserve clean environment
- 2007** Provided in-house warping service to DRD customers
- 2004** Introduced full digitalized treadsetter VLF Thermal CTP
- 2002** Installed 6 color full automatic sprint printing line first in Korea
- 2000** Acquired ISO9001 Certification
- 1989** Established Asan factory
- 1967** Established **Daesung Metal Printing Industry Inc**

We follow global standards which meet our global partner's criteria. We could have made a long-term relationship with our customers satisfying with our quality and consistency. Most of all, we recognize our faithfulness as our golden rule.



PROCESS & FACILITIES

PRINTING PROCESS



Outside Coating



Inside Coating



Printing



Varnishing

OUR SERVICES



Waxing Service



Coil Shearing Service



Metal Color Proof Service



DRD Warping Service

PRE-PRESS CTP PROCESS



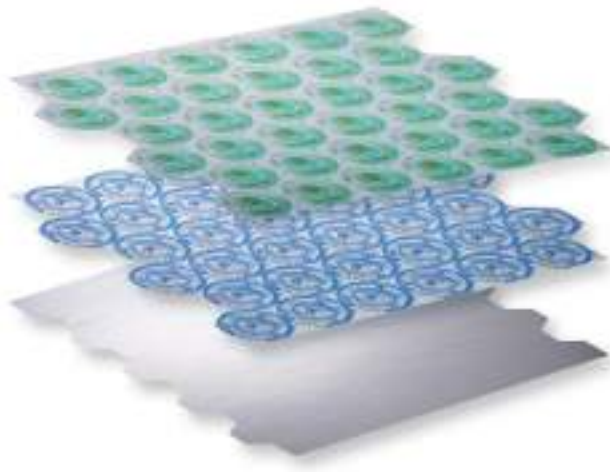
◀ Digitalized Design & CTP Process

Facilities		Capacity
Printing	One 8 color machine Two 6 color machine One 4 color machine Two 2 color machine	20,000MT/Month (2 color 1 pass based)
Coating & Varnishing	One High-Tech Tandem machine Three Tandem machine Three Single machine	15,000MT/Month (1 pass based)
Drying Oven	Thirteen Conventional Oven	Sheet Spec Range Thickness : 0.13-0.45mm Height : 540-960mm Width : 740-1080mm
Wax Line	For Aluminum sheet, ETP, TFS 5,700 sheets/hr	
Coil Shearing Line		2,000MT/Month

As a metal printing company specializing in state-of-the-art technology and the most advanced facilities in accordance with the global standard, we supply the world best quality coated/printed metal sheets to our global customers on time.

PRODUCT

2PC FOOD CAN



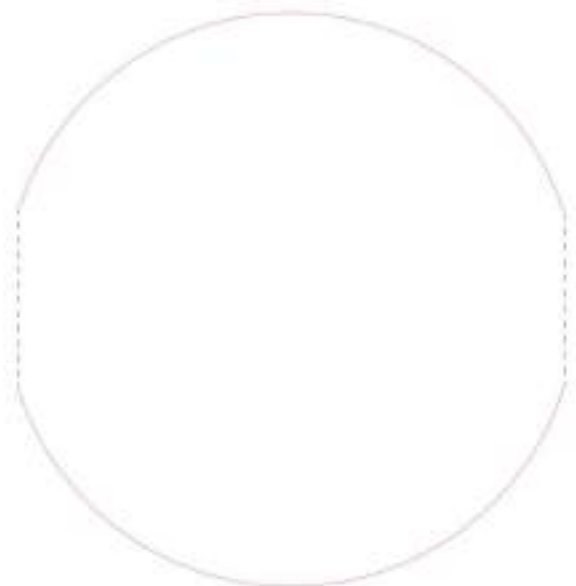
SPECIALTY BOX
(Dried food, Cookie, Bottle, Candy, Toy)



3PC FOOD CAN

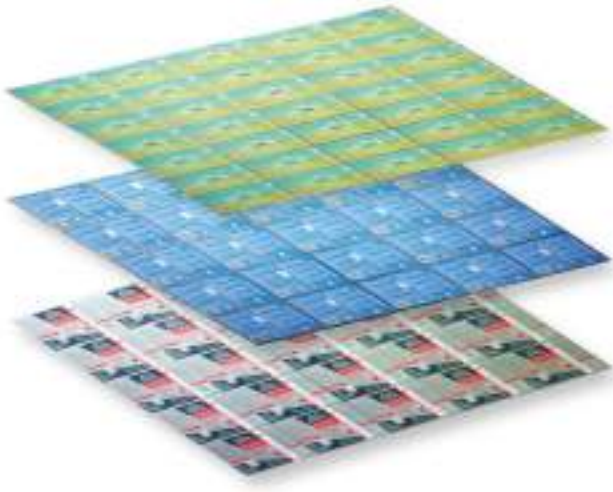


3PC INFANT POWDER MILK

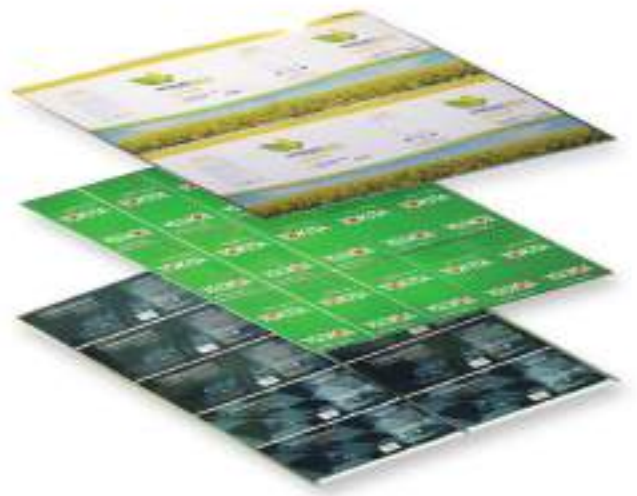


PRODUCT

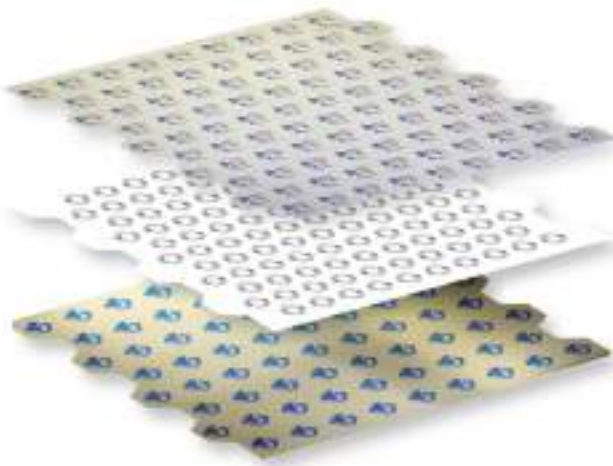
3PC AEROSOL CAN
(Air Freshener, Insecticide, Industrial Can)



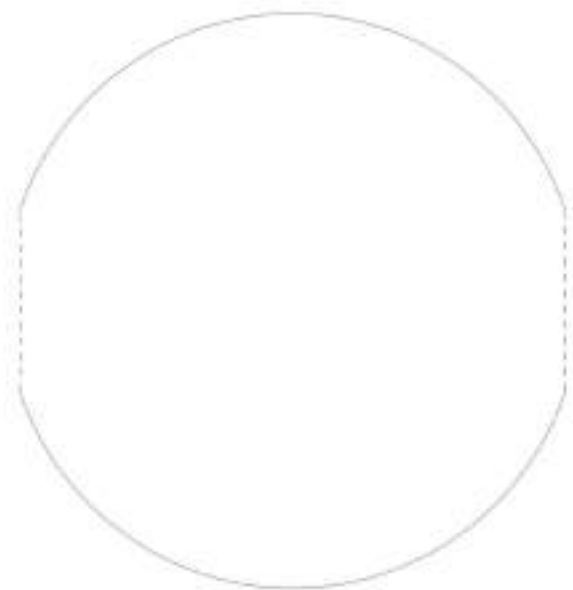
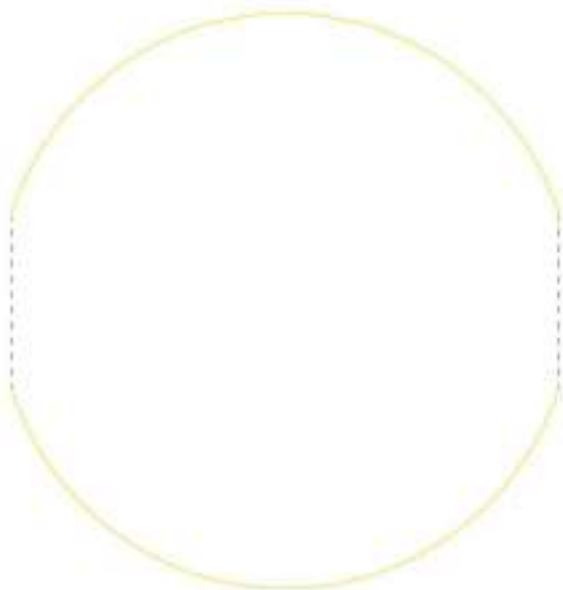
3PC PAINT/OIL CAN



END (FAEOE, Plain End)



CAP (Crown, Twist, White, PP)



PARTNERS & CUSTOMERS

PARTNERS

CUSTOMERS

MAP



ORDER PROCESS

HOW TO ORDER Coated / Printed Sheet

Coated sheet

1. Provide sheet specification (thickness, width, length, tin-coating 1.0/2.8/5.6, temper, base metal finish, CAL/BAF)
2. Provide lacquer specification. If you do not have designated lacquer or coating, we can also suggest right ones for you.

Printed sheet

1. To proceed with very first order, the information listed below is required.
 - Artworks in Ai, Artpro, or PDF format.
 - Sheet specification (thickness, width, length, tin coating 1.0/2.8/5.6, temper, etc.)
 - Sheet Layout
 - Can specification with can samples

*If you do not have designated lacquer or coating, we can find right ones for you.

For more information, please contact:

anthony@metalprint.co.kr (CEO, President)

jeremy@metalprint.co.kr (Global Business Manager)

Certificate

KMP achieved and renewed the quality management certification in accordance with the provisions of the international quality management ISO 9001:2015 and ISO 14001 certified at 2018.

In 2017, KMP certified food environment certificate FSSC22000 and HACCP from SGS.



Food Safety System

- EU Regulation
- Nestle Guidance note
- GB Standards
- FDA

KMP's printed tinplate is tested for all food safety rules and approved to be safe.

KMP follows all customer's requirements and global rules. We can provide any proof documents upon request.



Contact info

jeremy@metalprint.co.kr anthony@metalprint.co.kr

Tel. +82 70 7167 3514 Mobile, +82 10 2632 2569

Headquarter & Factory

108, Haewian-gil, Dunpo-myeon, Asan-si, Chungnam, Korea

Tel. +82 41 531 3501

Gyeonggi Office

707, Gungang Hitech Valley 2 Cha, 159, Sagmakgol-ro, Jungwon-gu, Seongnam-si, Gyeonggi-do, Korea

The contents of this booklet are subject to change without prior notice.

THE BEST HIGH QUALITY METAL PRINTING
SERVICE PROVIDER IN KOREA